



## 25/28 Beechworth Street Watson ACT

2 2 2

Surround yourself in Inner North luxury with this almost new, contemporary 2 bedroom, ensuite apartment located in peaceful surrounds of Watson. Situated on the first floor in the popular Norrebro estate, this beautifully cared for residence offers convenience and comfort, and an easy lifestyle close to nature.

### Key Features:

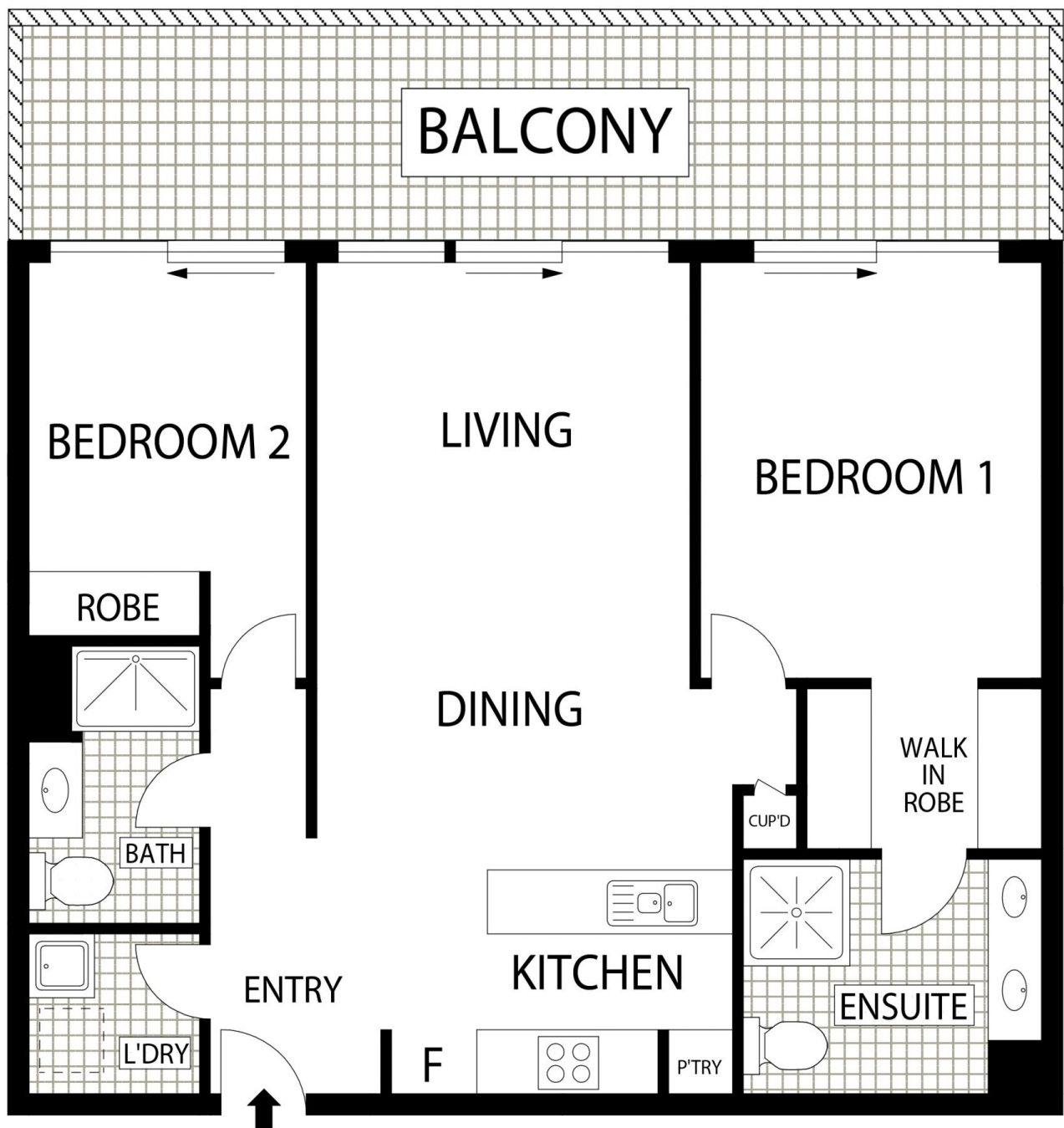
- ? Spacious two-bedroom apartment with great natural light
- ? Northerly aspect
- ? Main bedroom with walk-through robe
- ? Luxuriously sized ensuite to the main bedroom
- ? Second full bathroom next to bedroom 2
- ? An open, generously sized living and dining room

[For full version visit the website](https://www.seminaracoproperties.com.au/sale/act/inner-north/watson/residential/apartment/8068580)

<b>Type</b>	: Apartment
<b>Price</b>	: \$ 635,000
<b>Building Size</b>	: 84 sqm
<b>View</b>	: <a href="https://www.seminaracoproperties.com.au/sale/act/inner-north/watson/residential/apartment/8068580">https://www.seminaracoproperties.com.au/sale/act/inner-north/watson/residential/apartment/8068580</a>



**Lisa Quick**  
02 5105 5485



## 25/28 Beechworth Street, Watson

**Floor Plan Disclaimer:** This floor plan/site plan are intended as an approximate guide only. No representations or warranties of any nature are given or intended and any person using this information other than as a guide should always rely on their own enquirers.