



### 14/18 Austin Street Griffith ACT

1 1 2

Situated just minutes' walk to Manuka Village and set amongst wonderfully manicured boutique gardens, this beautiful 1 bedroom apartment, in the highly regarded "Amaya" complex, sets the tone for quiet living in a pristine location. The superb floor plan, quality fittings, and the spacious balcony, ideal for entertaining, together with a secure tandem lock-up garage, make this an apartment not to be missed.

Located next to the heritage listed Griffith oval, amongst other high quality homes. "Amaya" is a one of a kind low density complex situated around a stunning common area and is mostly occupied by discerning live- in owners.

Features of this property include:

[For full version visit the website](https://www.seminaracoproperties.com.au/lease/act/inner-south/griffith/residential/apartment/8173477)

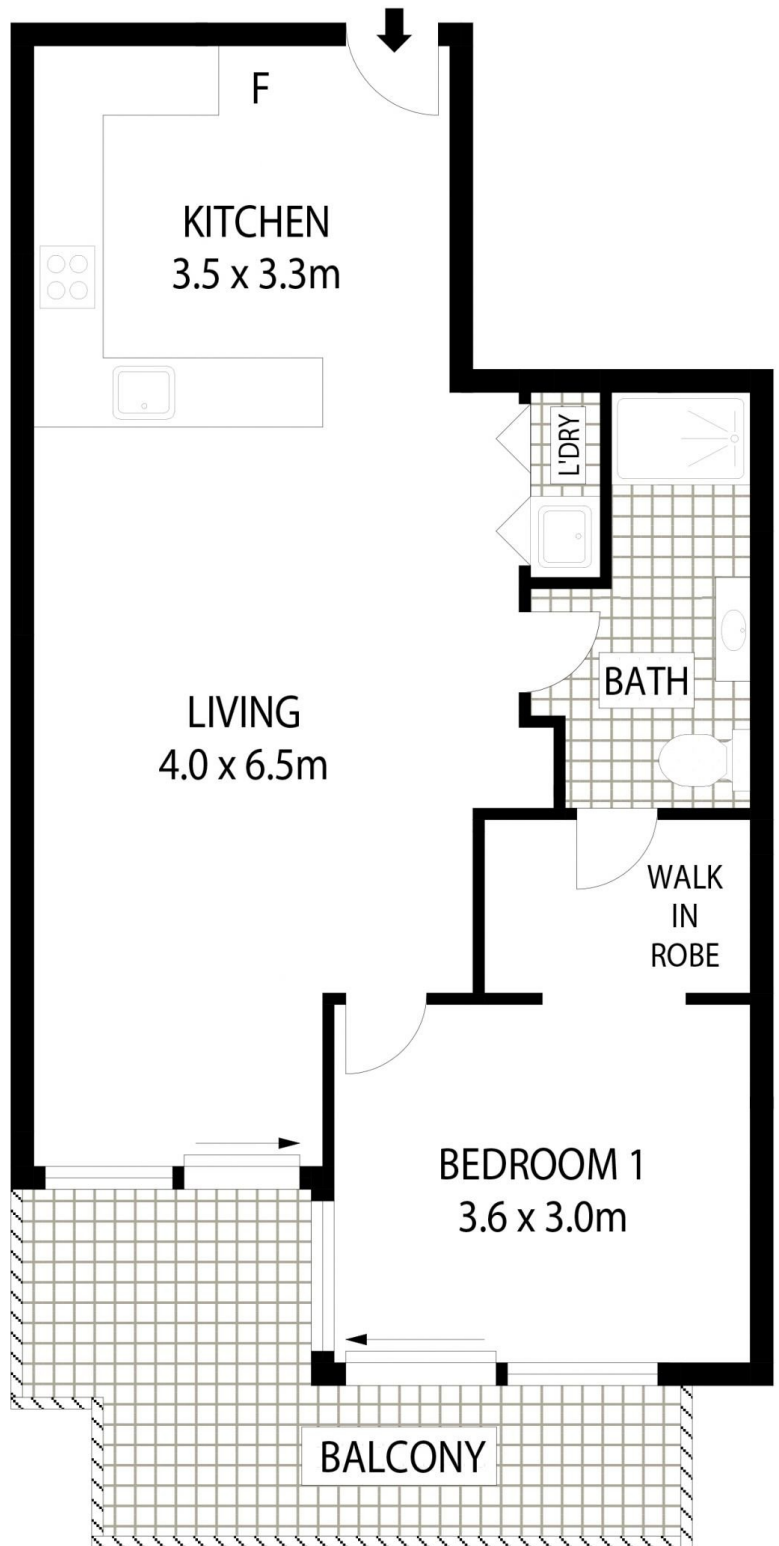
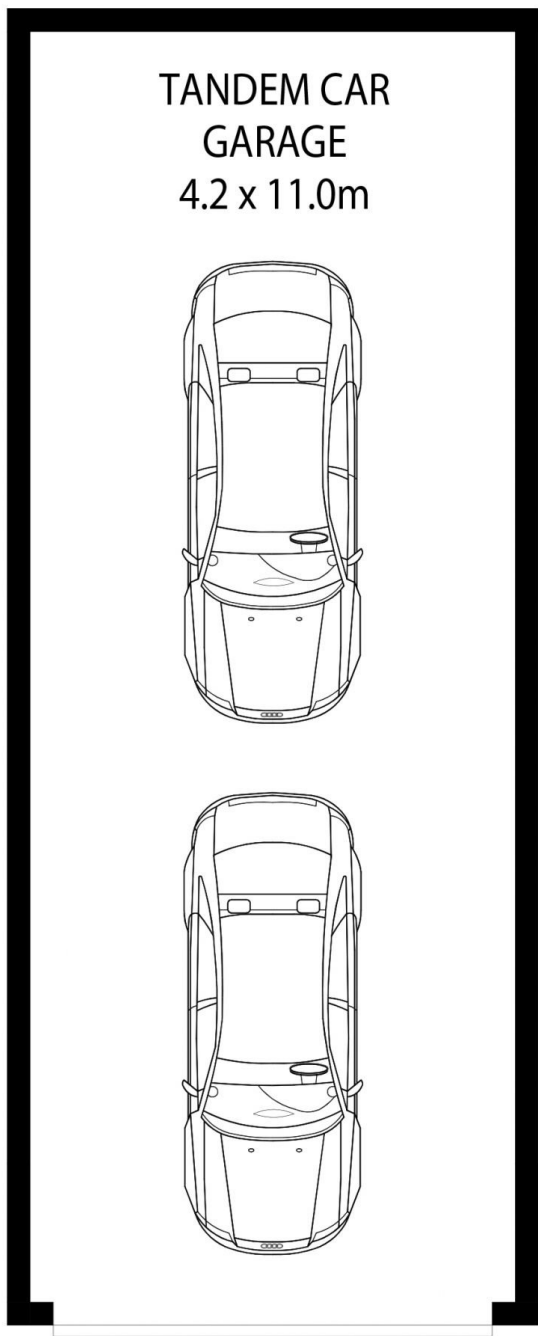
**Type** : Apartment

**Price** : \$650 per week

**View** : <https://www.seminaracoproperties.com.au/lease/act/inner-south/griffith/residential/apartment/8173477>



**Seminara & Co Rentals**  
02 5105 5485



14/18 Austin Street, Griffith

**Floor Plan Disclaimer:** This floor plan/site plan are intended as an approximate guide only. No representations or warranties of any nature are given or intended and any person using this information other than as a guide should always rely on their own enquiries.

APPROX : INTERNAL AREA :- 58 SQM  
 APPROX : GARAGE AREA :- 46 SQM  
 APPROX : EXTERNAL AREA :- 11 SQM